

M5 Junction 25 Improvement Scheme Project Newsletter: October 2020



Toneway/J25 Gyratory

We have now completed surfacing works on the A358 Toneway inbound and outbound.

We have also installed traffic signal cabling and apparatus in preparation for the commissioning of the new traffic signal controls and laid the white lining and high friction surfacing.

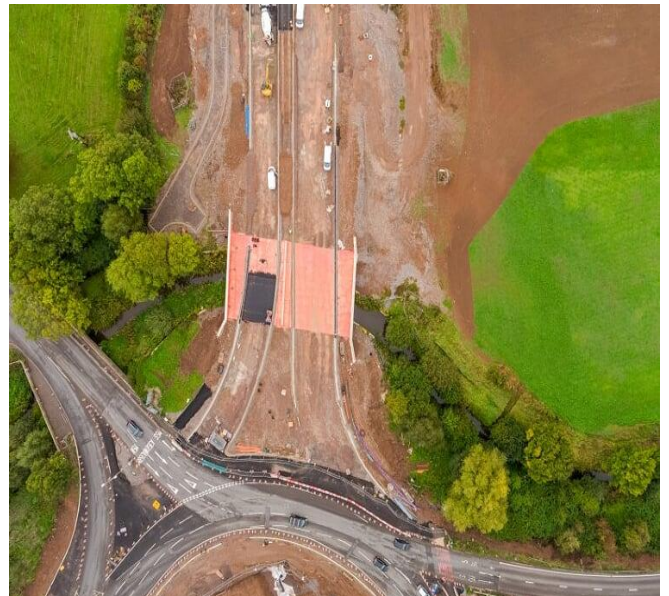
Upcoming works:

We will be continuing to install the traffic signal equipment for the next few weeks and dressing and seeding the verges in November.

Blackbrook Bridge

Recently we laid the surface course over the bridge deck to protect the waterproofing. The remaining surfacing to either side of the bridge will be laid in the coming weeks.

We've installed the ducting over the bridge with Wessex Water on site to connect the water main to the Nexus 25 Development. This will take up to two weeks to be commissioned.



M5 Junction 25 Improvement Scheme – October 2020 – Continued



New Nexus 25 Roundabout

We are continuing to instal lighting columns, signs and ducting for BT, electric & traffic signals. This will be ongoing for the next 4-6 weeks.

Access tracks are being filled and we've have installed the majority of the edgings. The reinforced grass has been installed on the north side of the bridge.

We have continued surfacing the footpaths including the red surfacing for cycle paths.

Ruishton Junction

Footpath works around the junction and heading towards the Toby Carvery are still ongoing – this is currently planned to stop now until traffic has switched to the new link road.



Drone footage: watch our latest update

Our latest drone footage is available on our project pages at Griffiths in the Community website

<https://community.alungriffiths.co.uk/projects-in-your-area/m5-j25-taunton/progress-videos/>

M5 Junction 25 Improvement Scheme – October 2020 – Continued



Creech Castle

We have installed new kerb alignments and surfaced the footpath.

To help ALDI with their opening times, we have been working out of hours, this has also helped to reduce impact on traffic flows.

We have recently started to construct foundations for the new retaining wall on Bridgwater Road.

The enabling works are progressing well and are on track to be finished in December. The new footpath will also be completed by December.

We would like to thank everyone on this route for your patience and understanding during these works.

Road Closures 20:00 – 06:00

09/11/2020 1 week - North bound entrance and exit.

09/11/2020 1 week – South bound entrance 1 lane and South bound exit.

23/11/2020 1 week – South bound exit closed.

23/11/2020 1 week - North bound entrance and north bound exit.

23/11/2020 1 week – South bound entrance.

Subscribe to our newsletter

If you would like to subscribe to receive future Newsletters and Bulletins, please click [HERE](#) and complete the online form for Mail Chimp. OR use this QR code:



We would be pleased to hear your comments. You can get in touch via our web site community.alungriffiths.co.uk or by contacting our Public Liaison Officer Jessica May on 0330 041 2184* or M5J25@alungriffiths.co.uk

*Calls to this number are charged at national call rates and included in inclusive minute plans from landlines and mobiles

Travel Somerset – for live travel alerts, roadworks information and winter weather updates

On Twitter @TravelSomerset and online 24/7 at <https://www.travelsomerset.co.uk/>

Junction 25 Somerset CC Webpage <https://www.travelsomerset.co.uk/j25/>